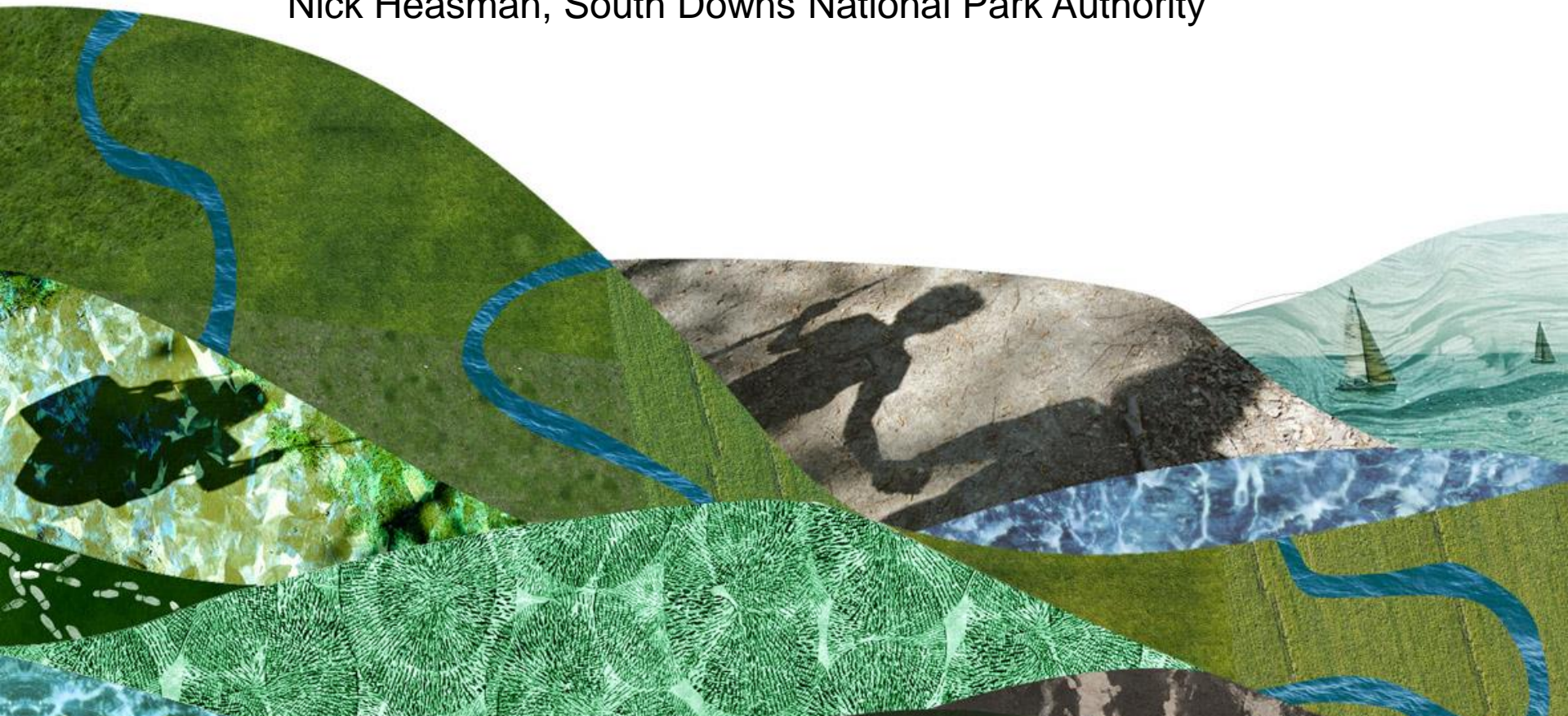


The South Downs National Park

– people, place and passion,
a short introduction to its past and present

Nick Heasman, South Downs National Park Authority



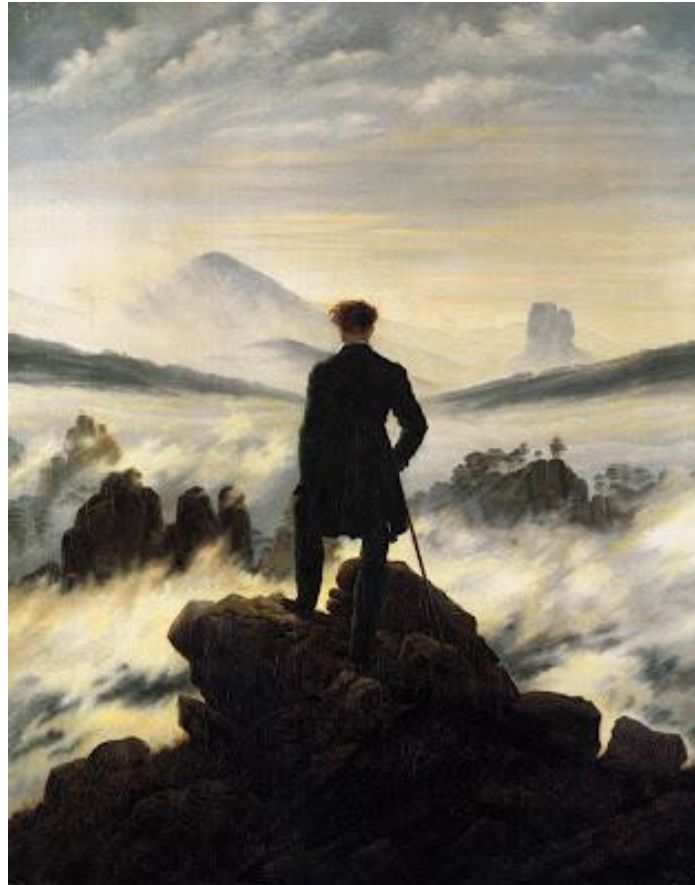
History of National Parks

Background and development to
National Parks and the South
Downs National Park

The significance of the
Arun Valley in the National Park



Where to start? Romantic notions of landscape?



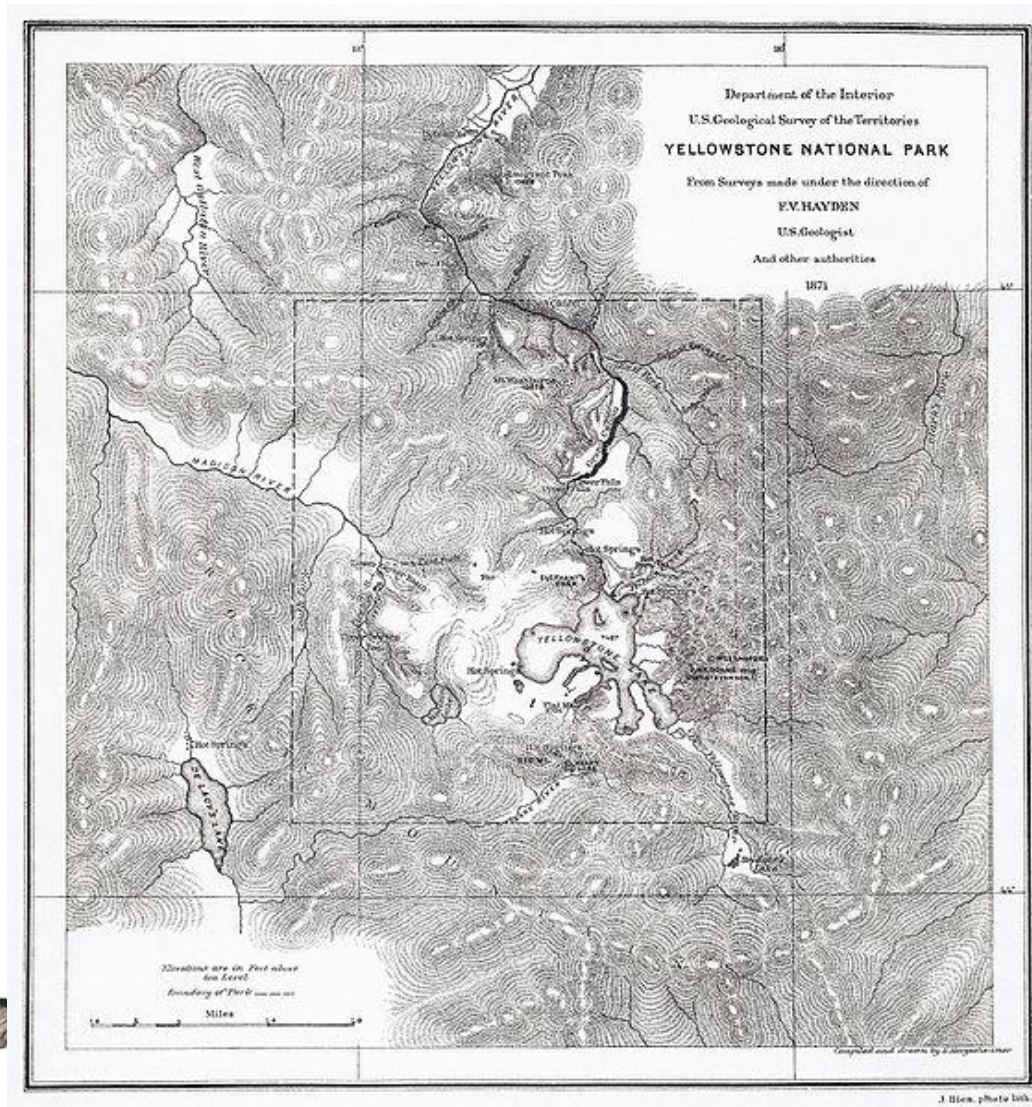
19th Century Pioneers



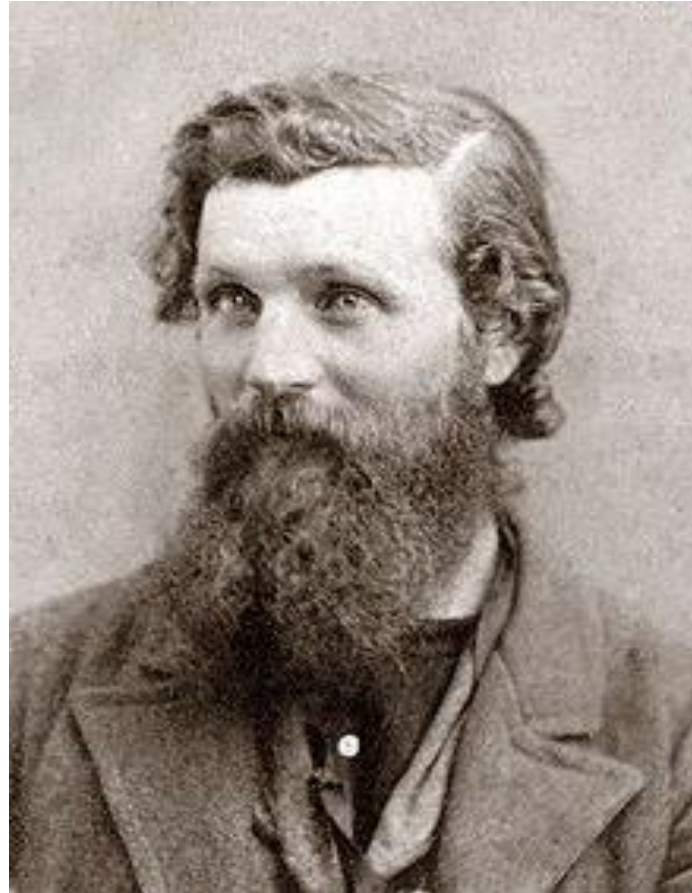
Protection of natural resources



1871 map of Yellowstone, 1872 the first National Park!



The father of protected areas





‘I only went out for a walk and finally concluded to stay out till sundown for going out I found was really going in’ – John Muir



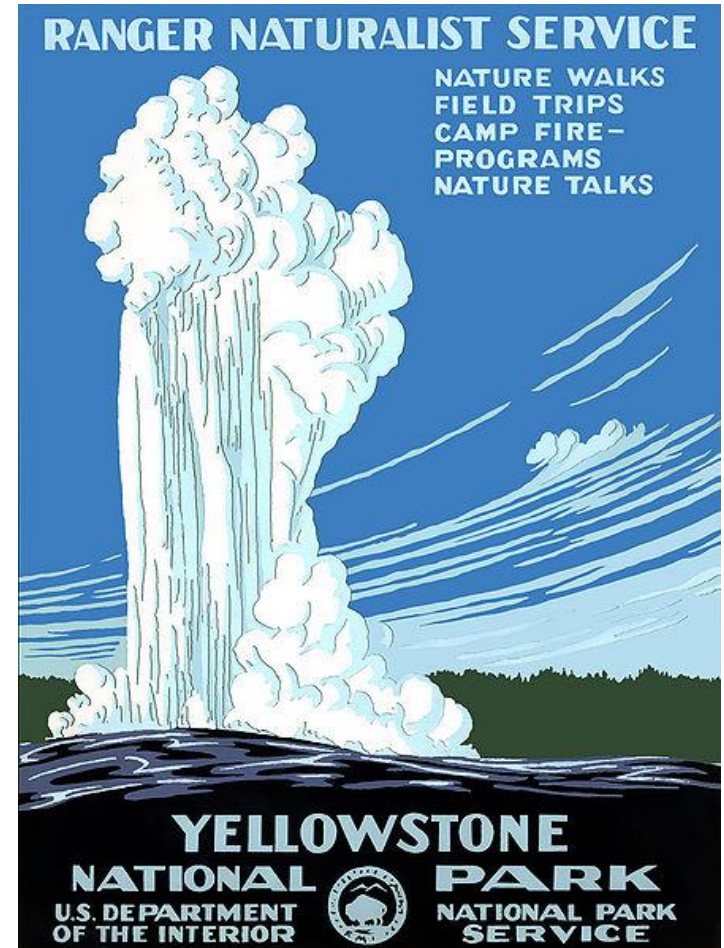
Protection not conservation!?



1903 improved management of national park

- Five national Parks
- 18 national monuments
- 55 national wildlife refuges
- 150 national forests

Theodore Roosevelt



Meanwhile in England...



South Downs Society
Protecting the beauty of The Downs



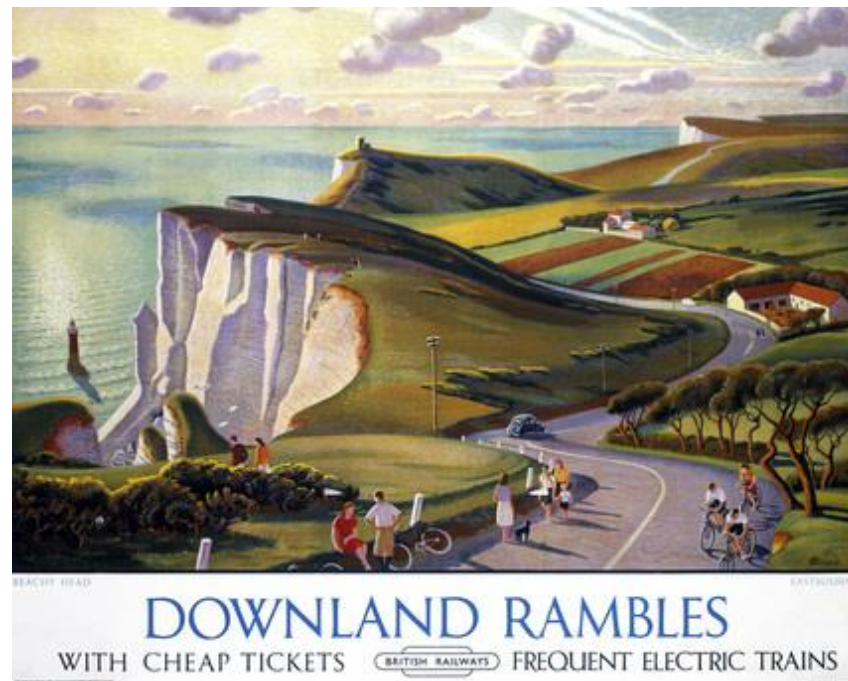


THE SOUTH DOWNS

I'm tired of crowded places.

Past history

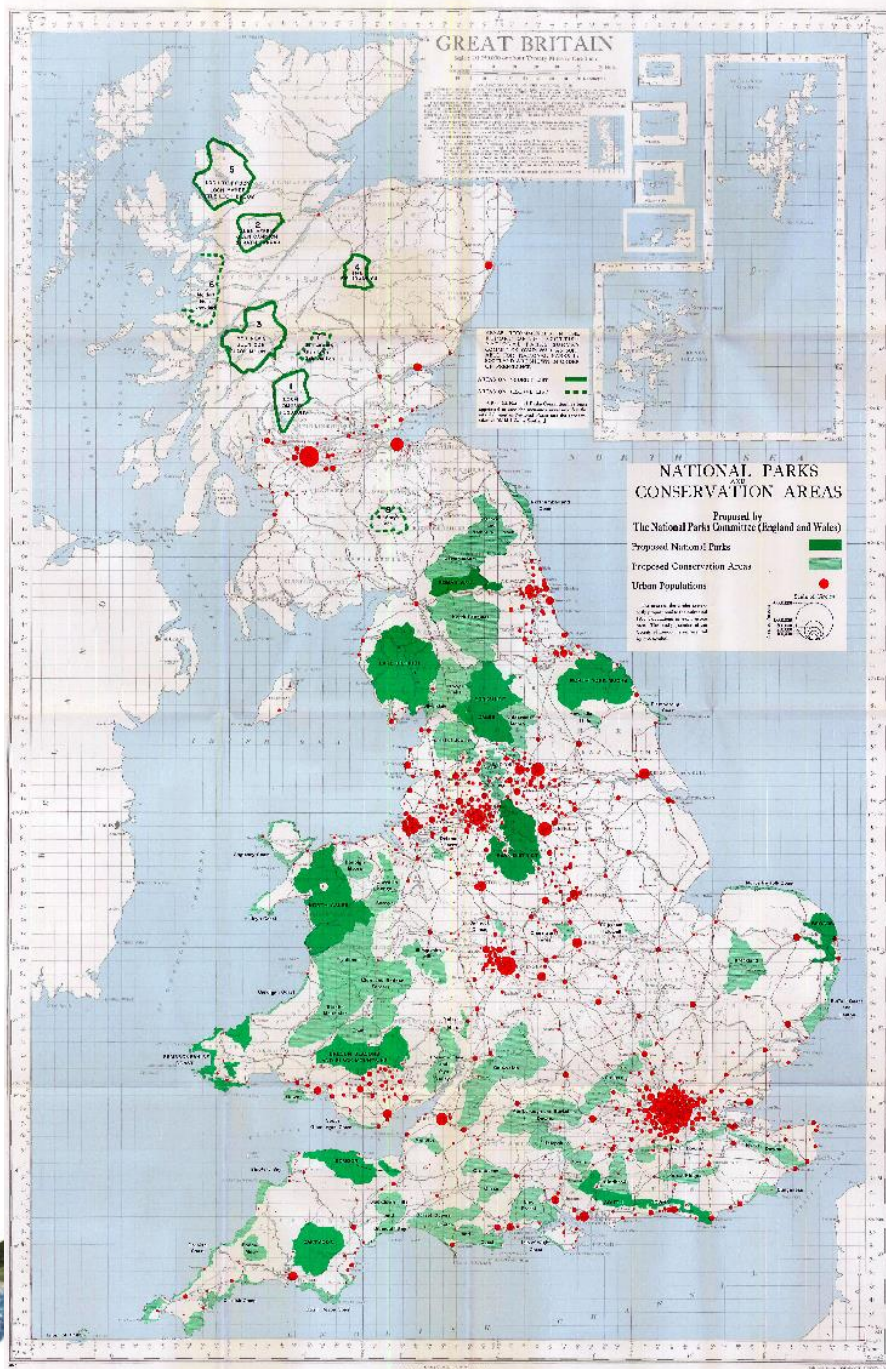
- 1930's vision – London and coastal towns/cities



- Lord Addison
- "the task of the National Park Authority will not be an easy one. It will be attacked by those who think that any expenditure on the preservation of natural beauties of the country is unjustifiable; assailed by enthusiasts who wish to press their own fancies or look for action on some heroic lines; importuned by private individuals who see in the proposals an opportunity of private gain, and opposed by others who resent any interference with private interests.
- Addison Report, Report of the National Park Committee, April 1931



1949 *National Parks & Access to Countryside Act*



Purpose and duty of a national park – *‘all about sustainability’*



Frontline downs



Past history

1956 rejected by National
Parks Commission



Frontline downs



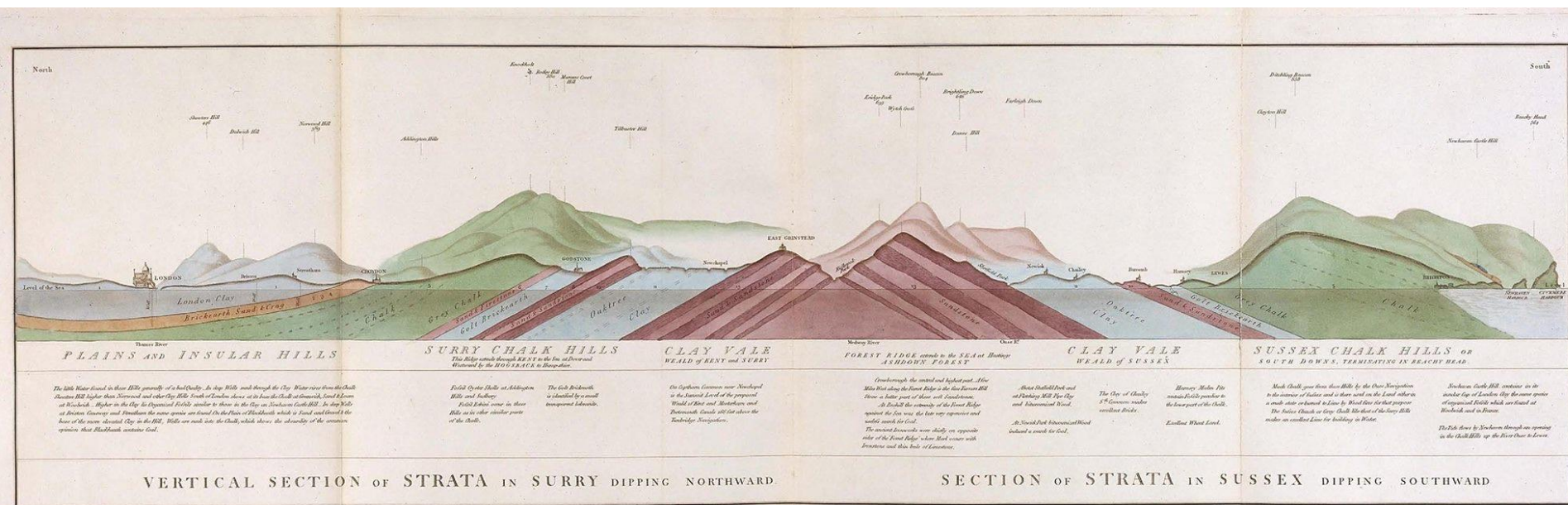
Dig for victory

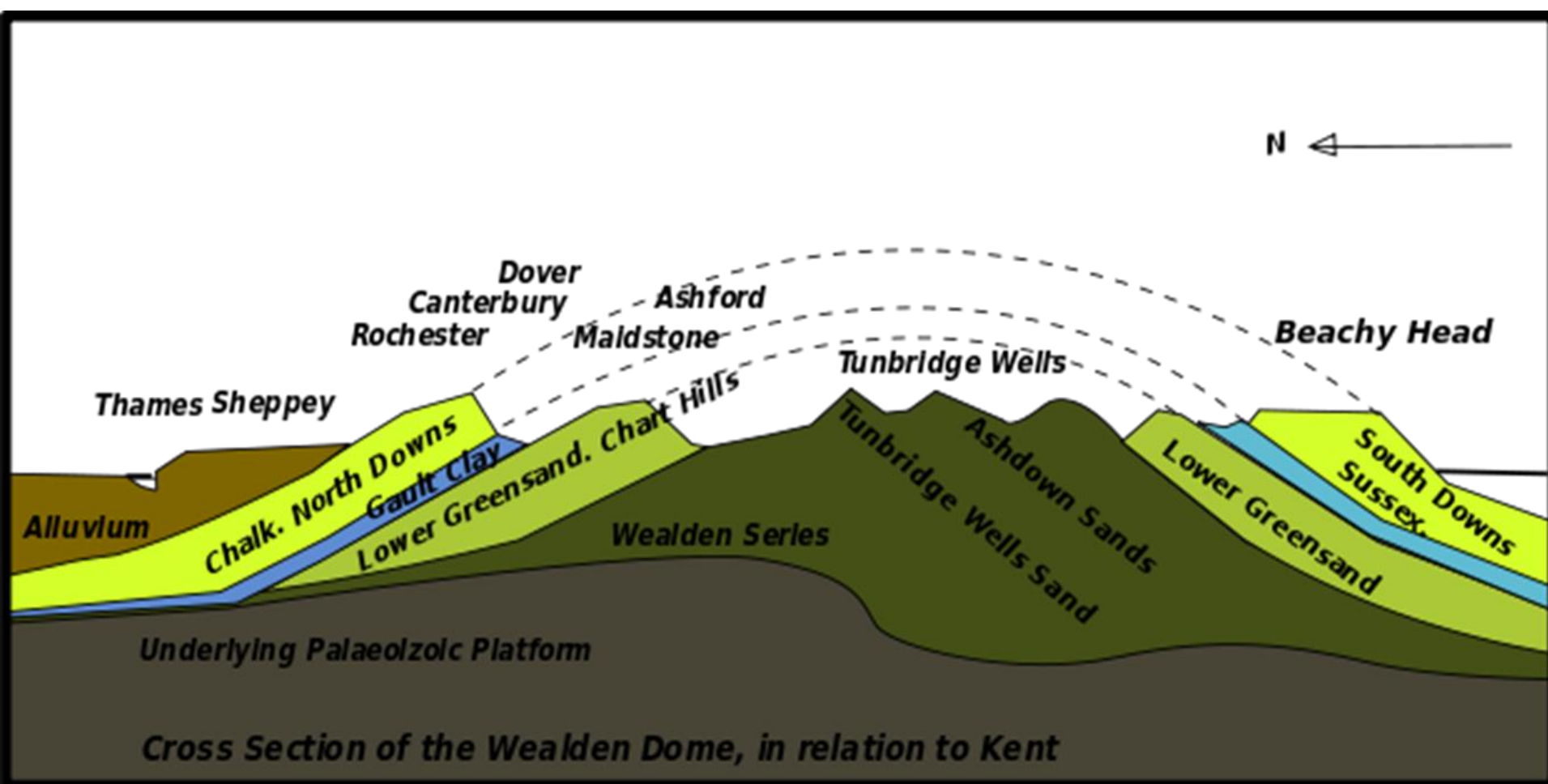


Along time ago....(the bones)



Shaped.....



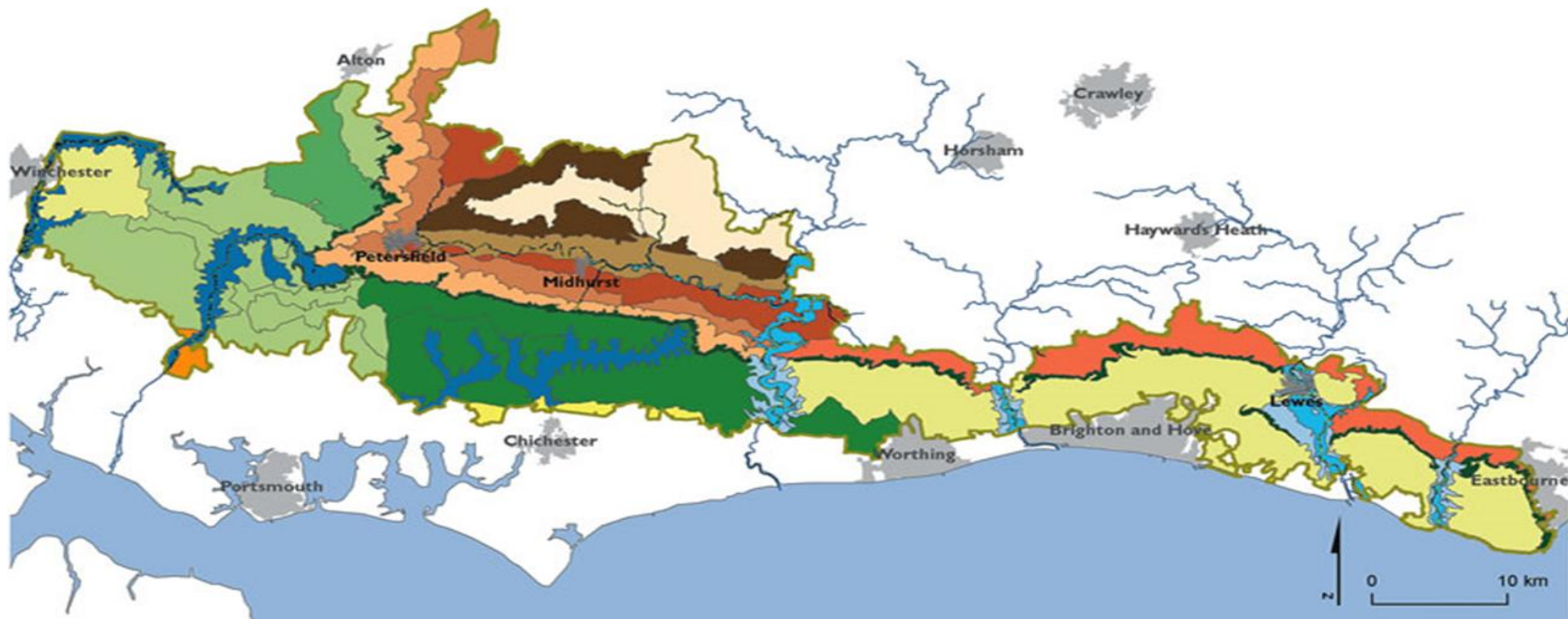


....and made, integrated landscape

KEY

Landscape Character Type

A: Open Downland	G: Major Valley Sides	N: Greensand Hills
B: Wooded Estate Downland	H: Major Scarps	O: Low Weald
C: Clay Plateau	I: Scarp Footslopes	P: Wooded Claylands
D: Downland Mosaic	J: Greensand Terrace	Q: Upper Coastal Plain
E: Chalk Valley Systems	K: Mixed Farmland and Woodland Vale	R: Shoreline
F: Major River Floodplains	L: Wealden Farmland and Heath Mosaic	South Downs National Park
	M: Sandy Arable Farmland	

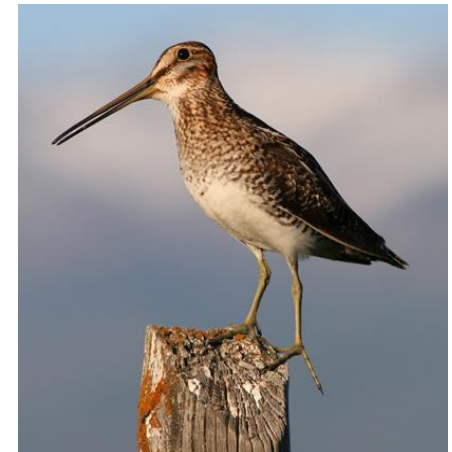


The Arun Valley, a special place

Special Area of Conservation (SAC)

Special Protected Area (SPA)

Special Site of Scientific Importance (SSSI)



The Arun Valley, a special place

Recreation and leisure, public health benefits

Loved and appreciated by visitors and local people

Historical importance from Bronze age to Late medieval



The Arun Valley, a special place

Food and farming

Communities

Wider rural economics based on the landscape





Thank you for listening

